

# For Sublease

Palisades Central II

2435 N Central Expressway - Richardson, TX 75080

**RICHARDSON SUBMARKET**



**CITADEL  
PARTNERS**

Real Estate Advisors

**Andy Goldston, CCIM**

Partner

(817) 809-6236 o | (469) 500-9693 c

AGoldston@CitadelPartnersUS.com

**Mac Morse, SIOR**

Partner

(972) 980-2917 o | (469) 556-1981 c

MMorse@CitadelPartnersUS.com



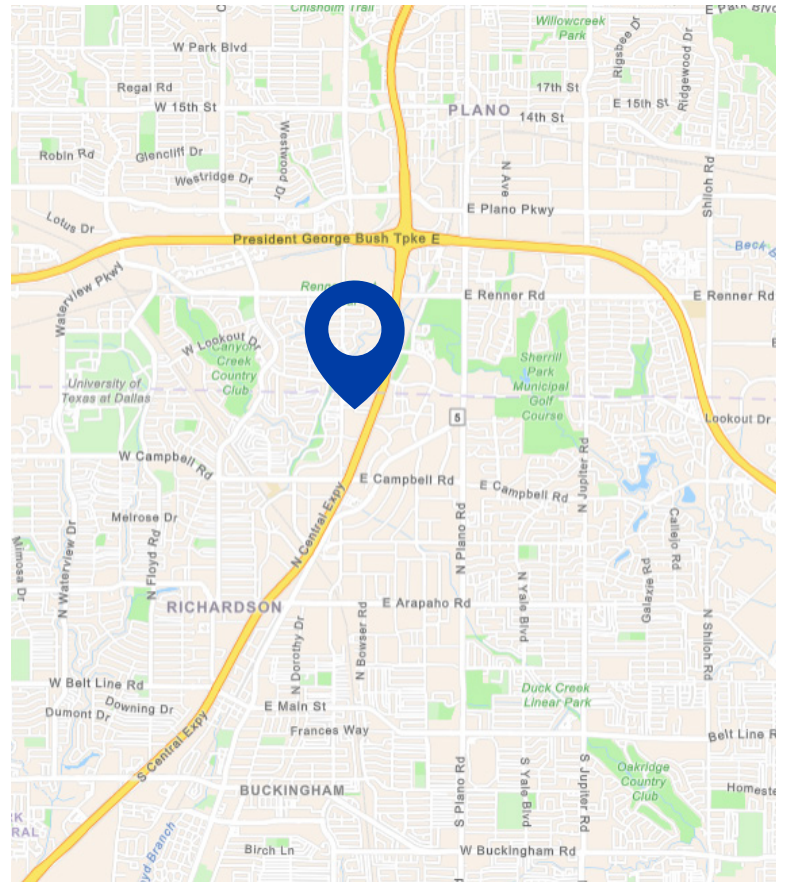




# Property Highlights

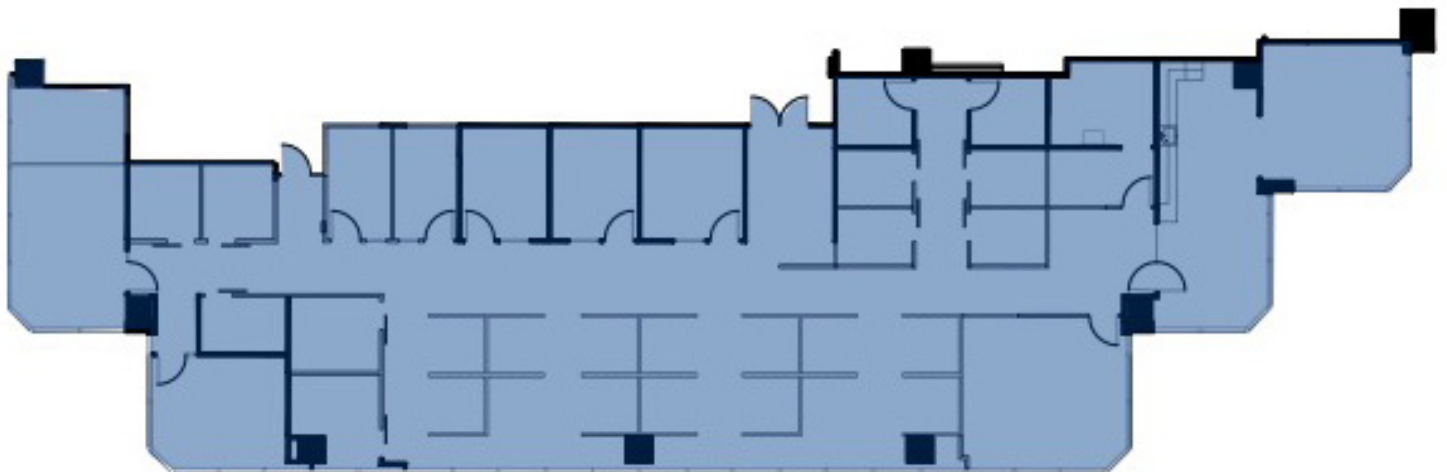
---

- Year Built: 1984
- Available Suite Size: Suite 420 - 5,599 SF
- Parking: 4.1 per 1,000 SF
- Sublease Expiration: 8/31/2029
- Building Amenities:
  - Fitness Center
  - Garage Parking
  - On-Site Security
- Office Layout:
  - 9 Closed Wall Offices
  - 4 Call Rooms
  - 13 Built-in Workstations
  - Large Break Area



## Suite 420 Floor Plan

---





# Palisades Central II

2435 N Central Expressway



**CITADEL  
PARTNERS**

Real Estate Advisors

15770 North Dallas Parkway, Suite 800  
Dallas, Texas 75248  
(972) 980-2800

300 Throckmorton Street, Suite 560  
Fort Worth, TX 76102  
(817) 840-7200

[CitadelPartnersUS.com](http://CitadelPartnersUS.com)

Copyright ©2025 Citadel Partners, LLC. The information contained herein was obtained from sources deemed reliable and is believed to be true; it has not been verified and as such, cannot be warranted nor form any part of any future contract.