



2811 McKinney Avenue

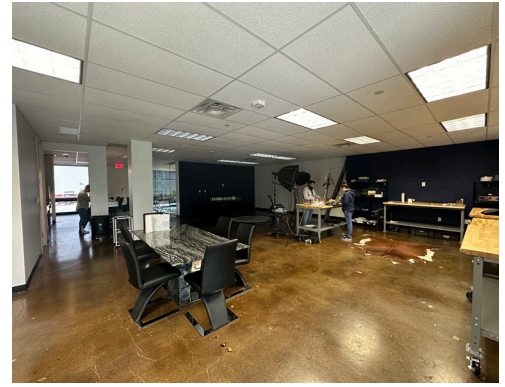
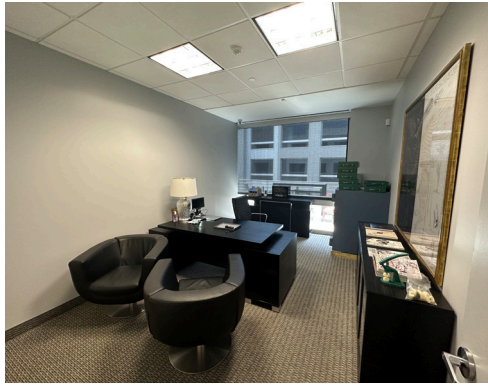
Suite 260 & 280 - 7,436 RSF
Dallas, TX 75204

UPTOWN OFFICE SUBMARKET



Sublease Opportunity

Interior Photos



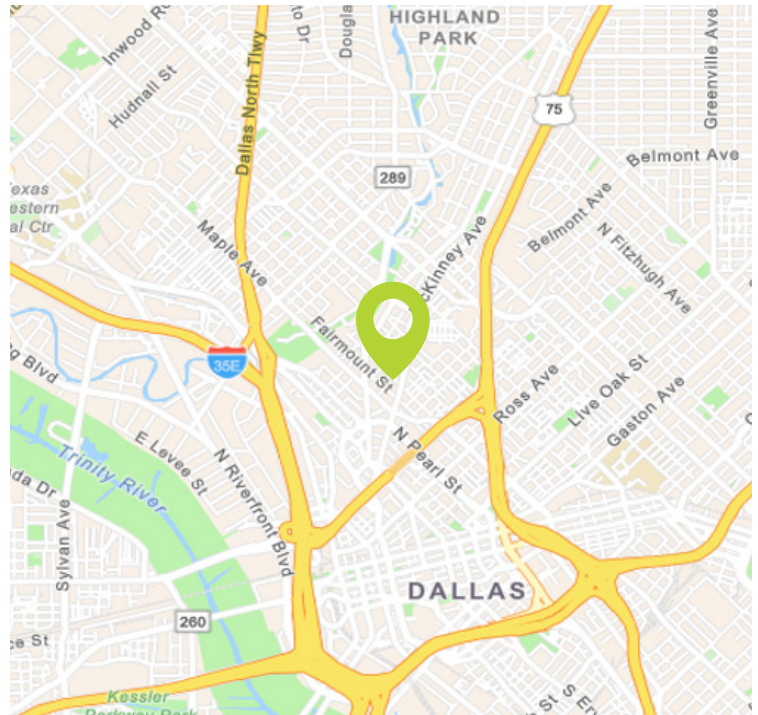


2811 McKinney Avenue, Suite 260 & 280

Dallas, Texas

Building Highlights

- 96,734 SF Office Building in the Heart of Uptown
- Built in 1985; Renovated in 2022
- Walkable Area Amenities
- Building Conference Center (adjacent to Sublease suite)
- Scenic Courtyard with Water Feature
- Covered Parking - 3:00/1,000 RSF
- On-Site Security
- Walkable Area Amenities
 - Dream Café
 - Cremona
 - Foxtrot Market
 - Whole Foods Market
 - Starbucks
 - Chipotle
 - Numerous salons and gyms

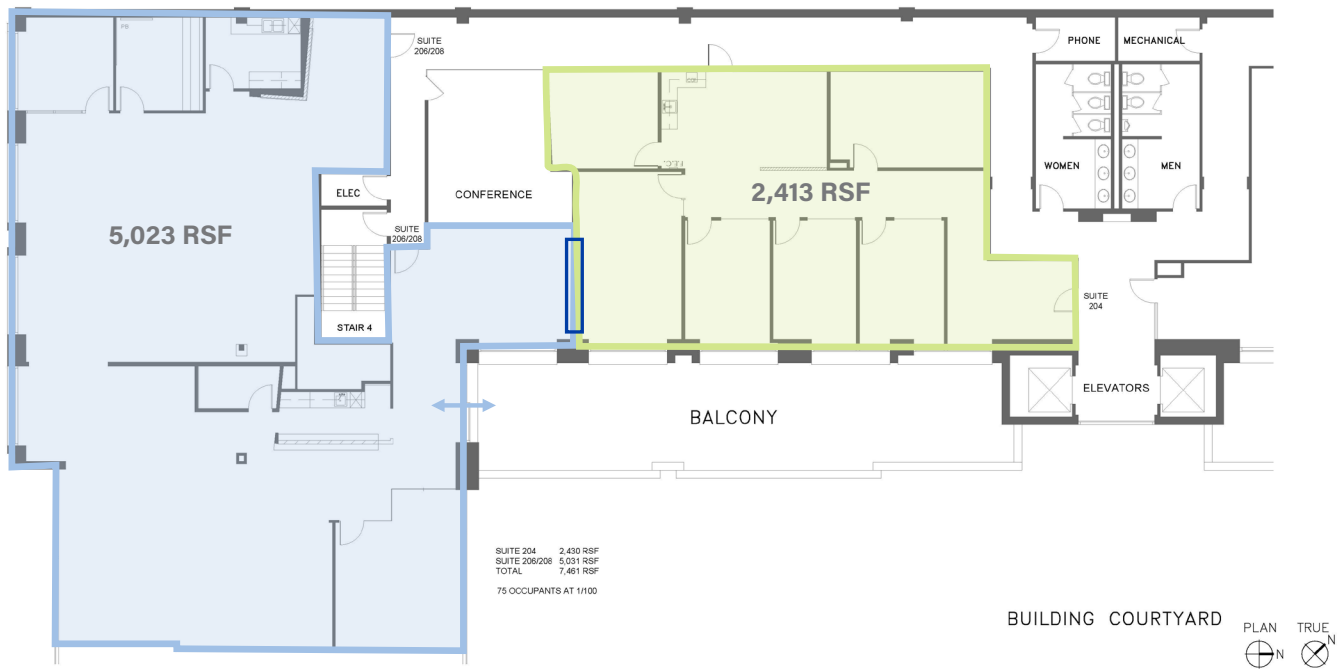


Sublease Features

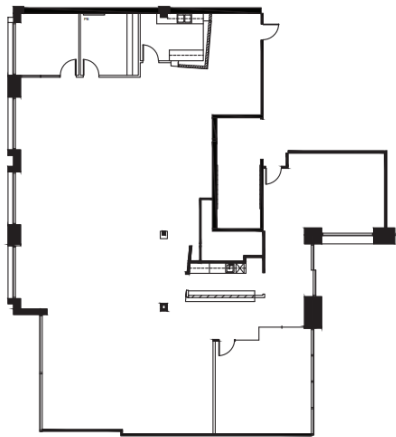
- Suite 260 - 2,413 Rentable Square Feet
- Suite 280 - 5,023 Rentable Square Feet
- May be leased separately or together, easily combined
- Elevator Exposure, Private Balcony, Large Bullpen, Reception, 7 Private Offices, 3 Break Areas
- Outstanding Views of McKinney Avenue
- Quick Availability
- Furniture Available for Plug-n-Play Solution
- Sublease includes two separate suites; may be taken individually or combined as needed
- Sublease Term through April 30, 2027



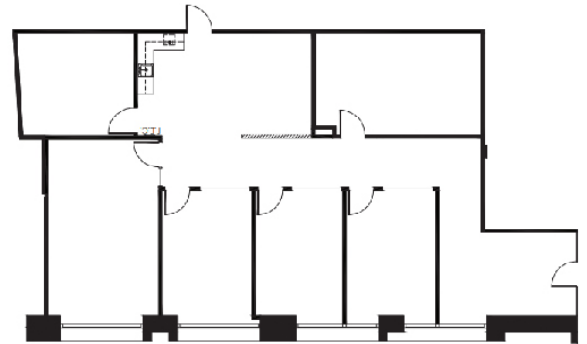
Floor Plan



Suite 280



Suite 260



**CITADEL
PARTNERS**

Real Estate Advisors

CITADEL PARTNERS

15770 N Dallas Parkway
Suite 800
Dallas, Texas 75248
(972) 980-2800

CitadelPartnersUS.com

Katherine Jessen *Senior Advisor*
(972) 980-0375 o | (214) 500-5134 c
KJessen@CitadelPartnersUS.com

Blake Welsh *Associate Advisor*
(972) 970-8020 o | (262) 825-6308 c
BWelsh@CitadelPartnersUS.com

Jakey Younger *Associate Advisor*
(214) 420-3164 o | (214) 449-5767 c
JYounger@CitadelPartnersUS.com