



# CITADEL PARTNERS

Real Estate Advisors

15770 N Dallas Parkway, Suite 950  
Dallas, Texas 75248  
(972) 980-2800

[CitadelPartnersUS.com](http://CitadelPartnersUS.com)



# Legacy Town Center I

## 7160 N Dallas Parkway

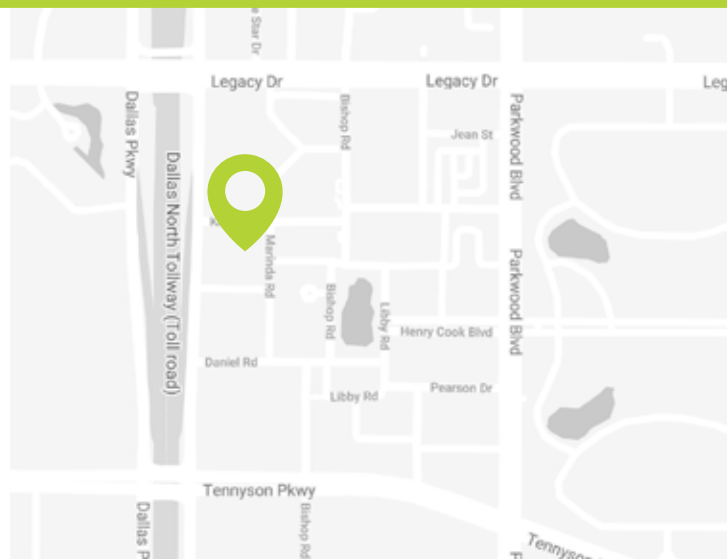
Plano, Texas

**SUBLEASE OPPORTUNITY**

### For Sublease

#### PROPERTY HIGHLIGHTS

- 9,197 Square Feet
- Term Through July 31, 2023
- 2nd Floor with elevator exposure
- Quick Availability
- Furniture Negotiable
- Large Conference Room
- Large bullpen for 28 or more 6' x 8' cubicles
- 3 Huddle Rooms
- 8 Hard-Wall Offices
- Spacious Breakroom and Collaboration Area
- Built-In Reception with Stone Accents



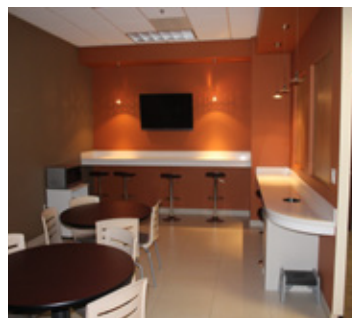
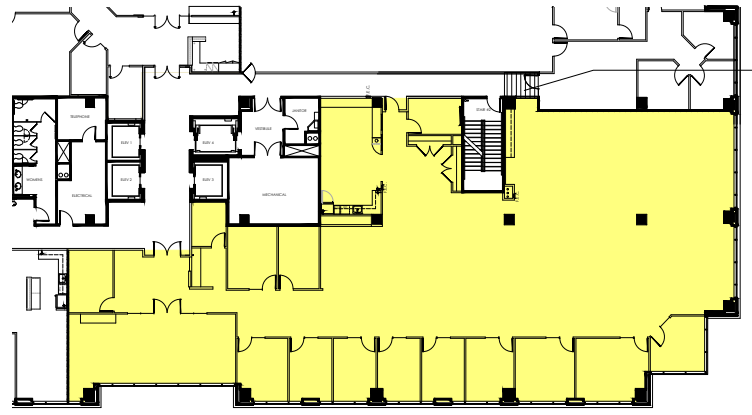
# 7160 N Dallas Parkway

Plano, Texas

UPPER TOLLWAY SUBMARKET

## Property Features

- Building size: 156,757 SF
- Built in 2002
- Class A Building
- Restrooms and corridors updated in 2020
- On Site Security
- Parking: 3.6/1,000
- Tollway frontage with access between Tennyson & Legacy
- Walkable to restaurants and shopping at the Shops in Legacy Town Center



**CITADEL  
PARTNERS**

Real Estate Advisors

**Tyler J. Thomas** Senior Advisor  
(214) 420-3163 o | (214) 422-9195 c  
TThomas@CitadelPartnersUS.com

**Katherine Jessen** Advisor  
(972) 980-0375 o | (214) 500-5134 c  
KJessen@CitadelPartnersUS.com