



CITADEL
PARTNERS

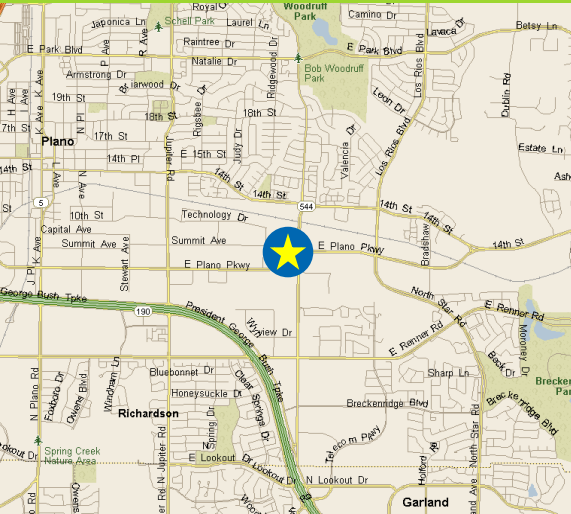
A REAL ESTATE ADVISORY FIRM

PLANO TECH CENTER 3

3501 E. Plano Parkway

Plano, TX 75074

FOR SUBLEASE



Scott M. Jessen, SIOR, CCIM

Managing Partner

direct 972.980.2825

mobile 214.914.4068

sjessen@citadelpartnersus.com

Andy W. Goldston, CCIM

Senior Advisor

direct 214.420.3168

mobile 469.500.9693

agoldston@citadelpartnersus.com

Space Overview

- Approximately 7,500 square feet
- Sublease Term through December 31, 2027
- Plug-and-Play Space
- Available for Immediate Occupancy
- 70/30 Closed Office/Bullpen Configuration
- Kitchen

Property Features

- Exterior Offices with Windows
- Secure Building Access
- Some Furniture Available
- Easy Access to Major Thoroughfares

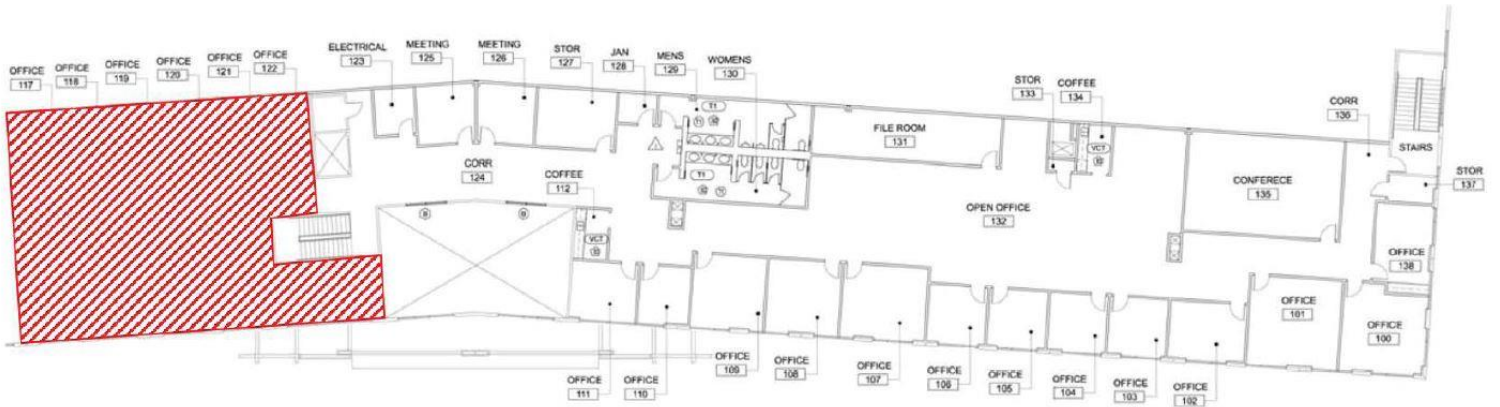
Citadel Partners, LLC.
15770 N Dallas Parkway
Suite 950
Dallas, TX 75248
main 972.980.2800

www.citadelpartnersus.com

This document has been prepared by Citadel Partners, LLC. for advertising and general information only. Citadel Partners, LLC. makes no guarantees, representations or warranties of any kind, expressed or implied, regarding the information including, but not limited to, warranties of content, accuracy and reliability. Any interested party should undertake their own inquiries as to the accuracy of the information. Citadel Partners, LLC. excludes unequivocally all inferred or implied terms, conditions and warranties arising out of this document and excludes all liability for loss and damages arising there from. This publication is the copyrighted property of Citadel Partners, LLC. and/or their licensor(s). All rights reserved.

3501 E. Plano Pkwy

Approximately 7,500 SF



Scott M. Jessen, SIOR, CCIM
Managing Partner
direct 972.980.2825
mobile 214.914.4068
sjessen@citadelpartnersus.com

Andy W. Goldston, CCIM
Senior Advisor
direct 214.420.3168
mobile 469.500.9693
agoldston@citadelpartnersus.com

Citadel Partners, LLC.
15770 N Dallas Parkway
Suite 950
Dallas, TX 75248
main 972.980.2800

www.citadelpartnersus.com