



CITADEL
PARTNERS

A REAL ESTATE ADVISORY FIRM

JUPITER RESOURCE CENTER 2605 TECHNOLOGY DRIVE Plano, Texas 75074

FOR SUBLEASE



For more information:

Andy W. Goldston, CCIM
Senior Advisor
214.420.3168 direct
469.500.9693 cell
agoldston@citadelpartnersus.com

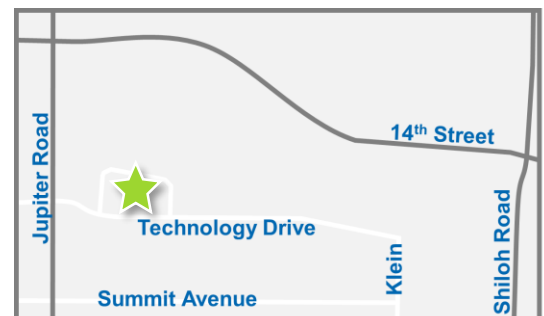
Scott A. Morse, SIOR, CCIM
Managing Partner
972.980.2802 direct
214.215-3174 cell
smorse@citadelpartnersus.com

Space Overview

- 29,070 square feet
± 4,000 square feet of office
- Term through 12/31/2021
- 20' clear height
- 8 dock high doors
- Furniture & racking available
- Approximately 12,800 square feet of HVAC production space
- Sprinklered

Building Features

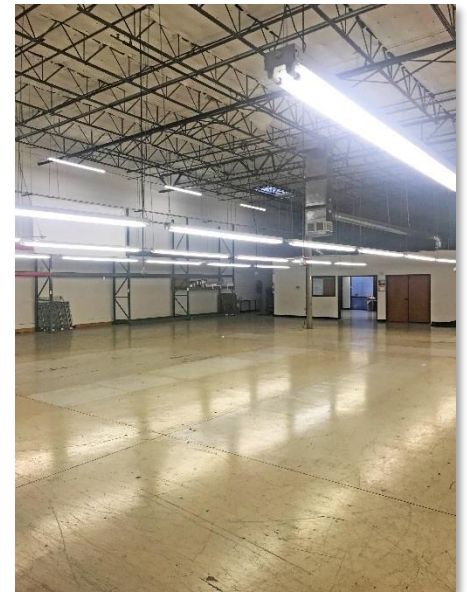
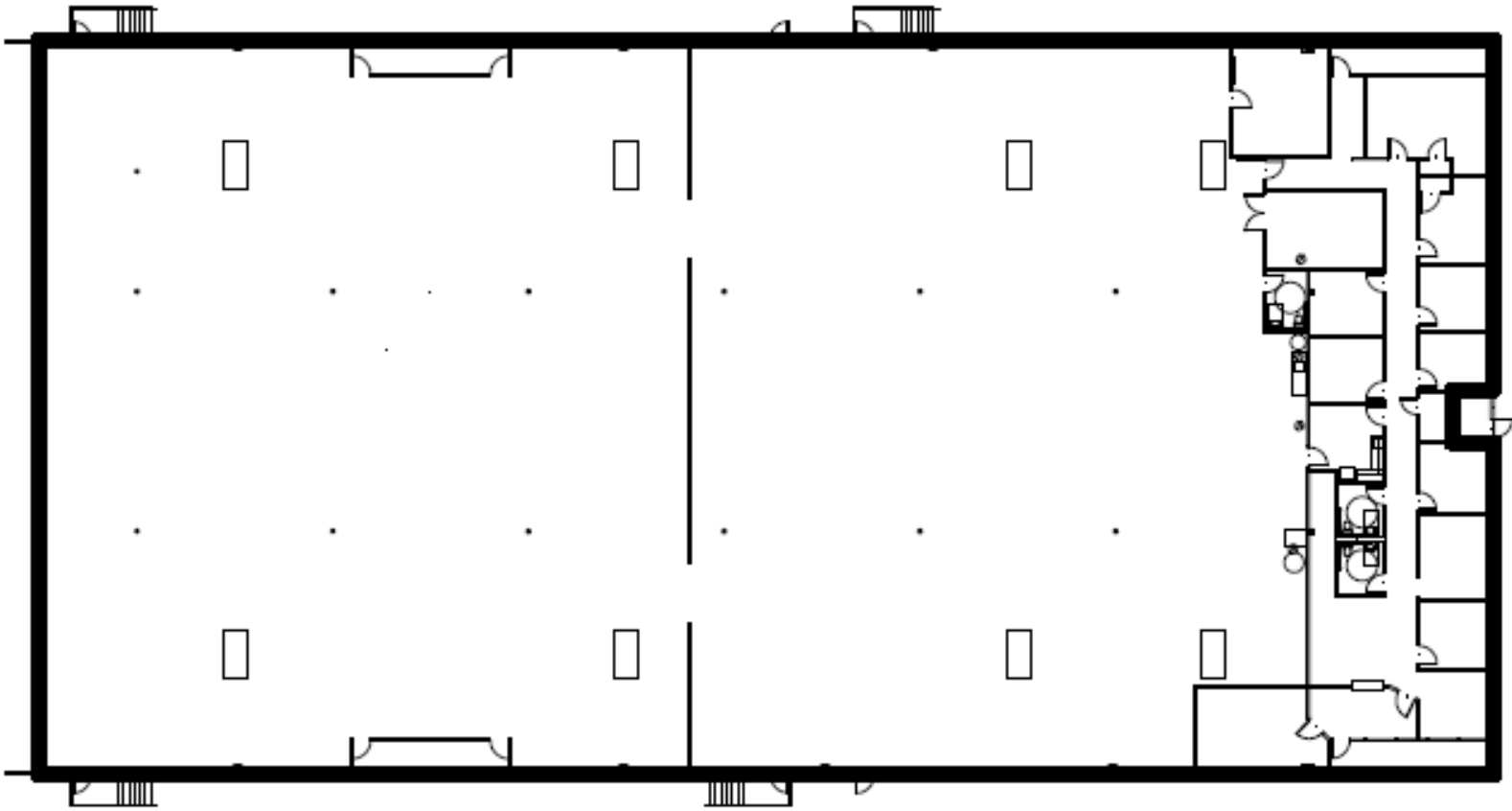
- 44,255 square foot industrial building
- Built in 1995



This document has been prepared by Citadel Partners, LLC. for advertising and general information only. Citadel Partners, LLC. makes no guarantees, representations or warranties of any kind, expressed or implied, regarding the information including, but not limited to, warranties of content, accuracy and reliability. Any interested party should undertake their own inquiries as to the accuracy of the information. Citadel Partners, LLC. excludes unequivocally all inferred or implied terms, conditions and warranties arising out of this document and excludes all liability for loss and damages arising there from. This publication is the copyrighted property of Citadel Partners, LLC. and/or their licensor(s). All rights reserved.

2605 Technology Drive
Plano, Texas 75074

Sublease
± 29,070 Square Feet



For more information:

Andy W. Goldston, CCIM
Senior Advisor
214.420.3168 direct
469.500.9693 cell
agoldston@citadelpartnersus.com

Scott A. Morse, SIOR, CCIM
Managing Partner
972.980.2802 direct
214.215-3174 cell
smorse@citadelpartnersus.com

Citadel Partners, LLC.
15770 N Dallas Parkway
Suite 950
Dallas, TX 75248
main 972.980.2800
www.citadelpartnersus.com