



CITADEL
PARTNERS

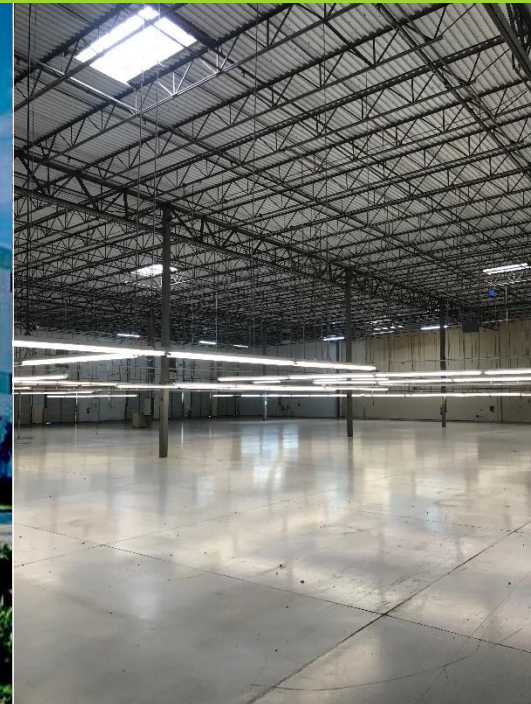
A REAL ESTATE ADVISORY FIRM

VALWOOD WEST – BLDG C

2045 WESTGATE DRIVE

Carrollton, Texas 75006

FOR SUBLEASE



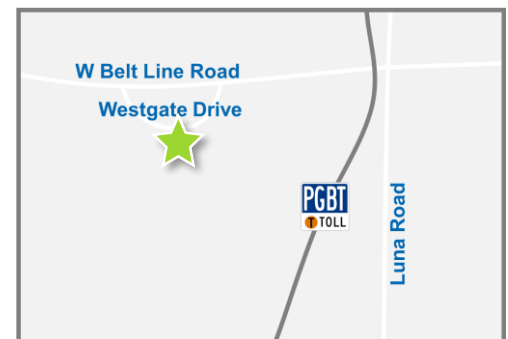
For more information:

Andy W. Goldston, CCIM
Senior Advisor
214.420.3168 direct
469.500.9693 cell
agoldston@citadelpartnersus.com

Scott M. Jessen, SIOR, CCIM
Managing Partner
972.980.2825 direct
214.914.4068 cell
sjessen@citadelpartnersus.com

Space Overview

- 43,839 square feet
± 9,500 square feet of office
- Term through February 28, 2025
- 11 dock doors
- One (1) oversized ramp (16'x14')
- 24' clear height
- Available Now



Building Features

- 134,331 square foot industrial building
- Built in 1999



This document has been prepared by Citadel Partners, LLC. for advertising and general information only. Citadel Partners, LLC. makes no guarantees, representations or warranties of any kind, expressed or implied, regarding the information including, but not limited to, warranties of content, accuracy and reliability. Any interested party should undertake their own inquiries as to the accuracy of the information. Citadel Partners, LLC. excludes unequivocally all inferred or implied terms, conditions and warranties arising out of this document and excludes all liability for loss and damages arising there from. This publication is the copyrighted property of Citadel Partners, LLC. and/or their licensor(s). All rights reserved.

2045 Westgate Drive
Carrollton, Texas 75006

Sublease
43,839 square feet



For more information:

Andy W. Goldston, CCIM
Senior Advisor
214.420.3168 direct
469.500.9693 cell
agoldston@citadelpartnersus.com

Scott M. Jessen, SIOR, CCIM
Managing Partner
972.980.2825 direct
214.914.4068 cell
sjessen@citadelpartnersus.com

Citadel Partners, LLC.
15770 N Dallas Parkway
Suite 950
Dallas, TX 75248
main 972.980.2800

www.citadelpartnersus.com