



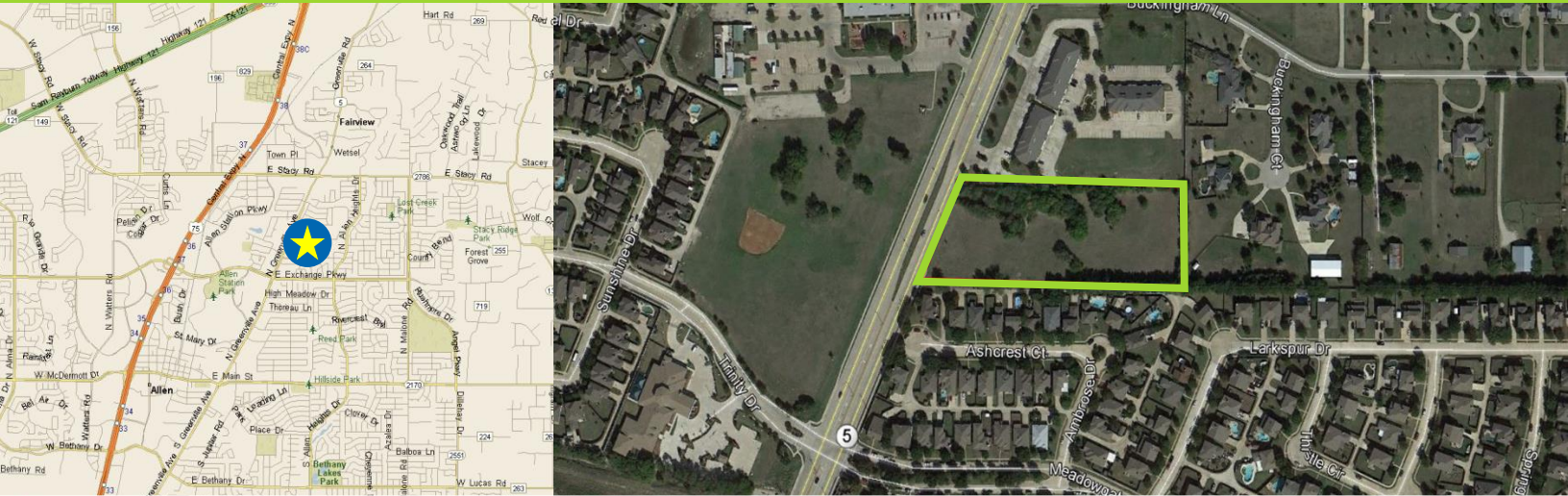
CITADEL
PARTNERS

A REAL ESTATE ADVISORY FIRM

1500 N. Greenville

1500 N. Greenville Ave

Allen, TX 75002



Mac D. Morse

Advisor

direct 972.980.2917

mobile 469.556.1981

mmorse@citadelpartnersus.com

Tyler J. Thomas

Advisor

direct 214.420.3163

mobile 214.422.9195

tthomas@citadelpartnersus.com

Scott A. Morse, SIOR, CCIM

Managing Partner

direct 972.980.2802

mobile 214.215.3174

smorse@citadelpartnersus.com

Site Overview

- 3.59 Acres
- 285 feet of Frontage on Greenville Ave
- Great Build-to-Suit Site
- Zoned AO (Agriculture-Open Space)
- Close Proximity to Allen High School
- Near Allen Village at Stacy Rd and North Central Expressway

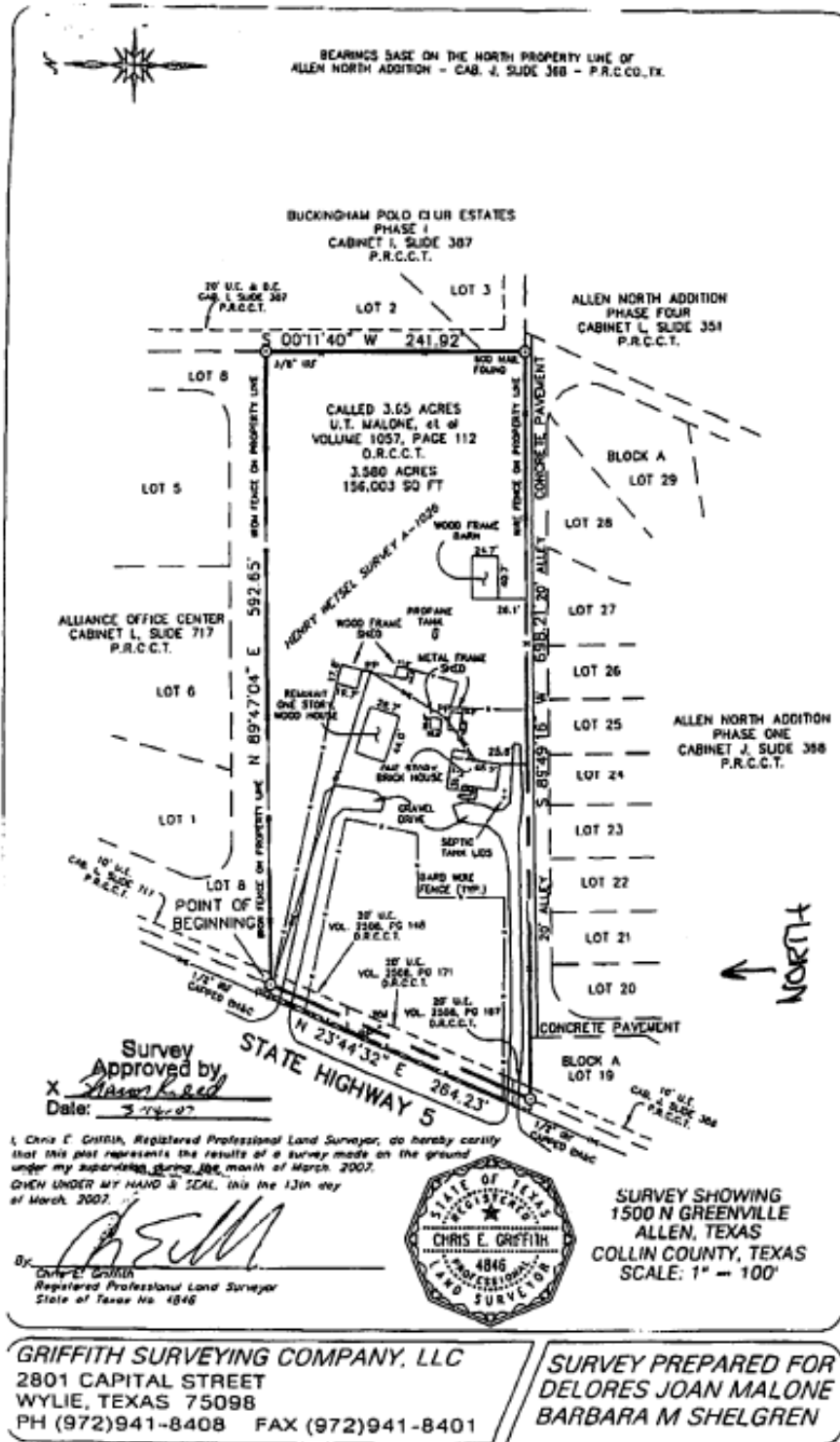
Citadel Partners, LLC.
15770 N Dallas Parkway
Suite 950
Dallas, TX 75248
main 972.980.2800

www.citadelpartnersus.com

This document has been prepared by Citadel Partners, LLC. for advertising and general information only. Citadel Partners, LLC. makes no guarantees, representations or warranties of any kind, expressed or implied, regarding the information including, but not limited to, warranties of content, accuracy and reliability. Any interested party should undertake their own inquiries as to the accuracy of the information. Citadel Partners, LLC. excludes unequivocally all inferred or implied terms, conditions and warranties arising out of this document and excludes all liability for loss and damages arising there from. This publication is the copyrighted property of Citadel Partners, LLC. and/or their licensor(s). All rights reserved.

1500 N. Greenville Ave

Approximately 3.5 Acres



Mac D. Morse
Advisor
direct 972.980.2917
mobile 469.556.1981
mmorse@citadelpartnersus.com

Tyler J. Thomas
Advisor
direct 214.420.3163
mobile 214.422.9195
smorse@citadelpartnersus.com

Scott A. Morse, SIOR, CCIM
Managing Partner
direct 972.980.2802
mobile 214.215.3174
smorse@citadelpartnersus.com

Citadel Partners, LLC.
15770 N Dallas Parkway
Suite 950
Dallas, TX 75248
main 972.980.2800