



CITADEL
PARTNERS

A REAL ESTATE ADVISORY FIRM

PLANO BUSINESS PARK

3701 E PLANO PARKWAY

Plano, TX 75074

FOR SUBLEASE



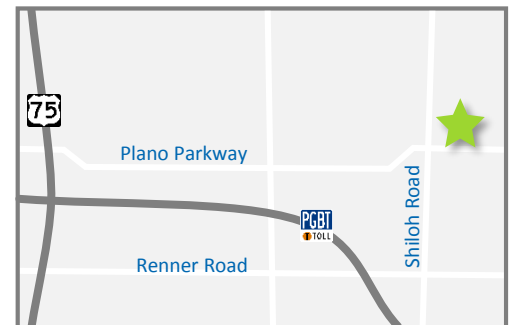
For more information:

Andy W. Goldston, CCIM
Senior Advisor
214.420.3168 direct
469.500.9693 cell
agoldston@citadelpartnersus.com

Scott M. Jessen, SIOR, CCIM
Managing Partner
972.980.2825 direct
214.914.4068 cell
sjessen@citadelpartnersus.com

Space Overview

- Term through November 30, 2025
- 18,800 square feet
 - Office/Production Area: 4,500 square feet
 - Production Area: 2,700 square feet
- 7 dock doors
- 1 ramp with oversized door
- Sprinklered



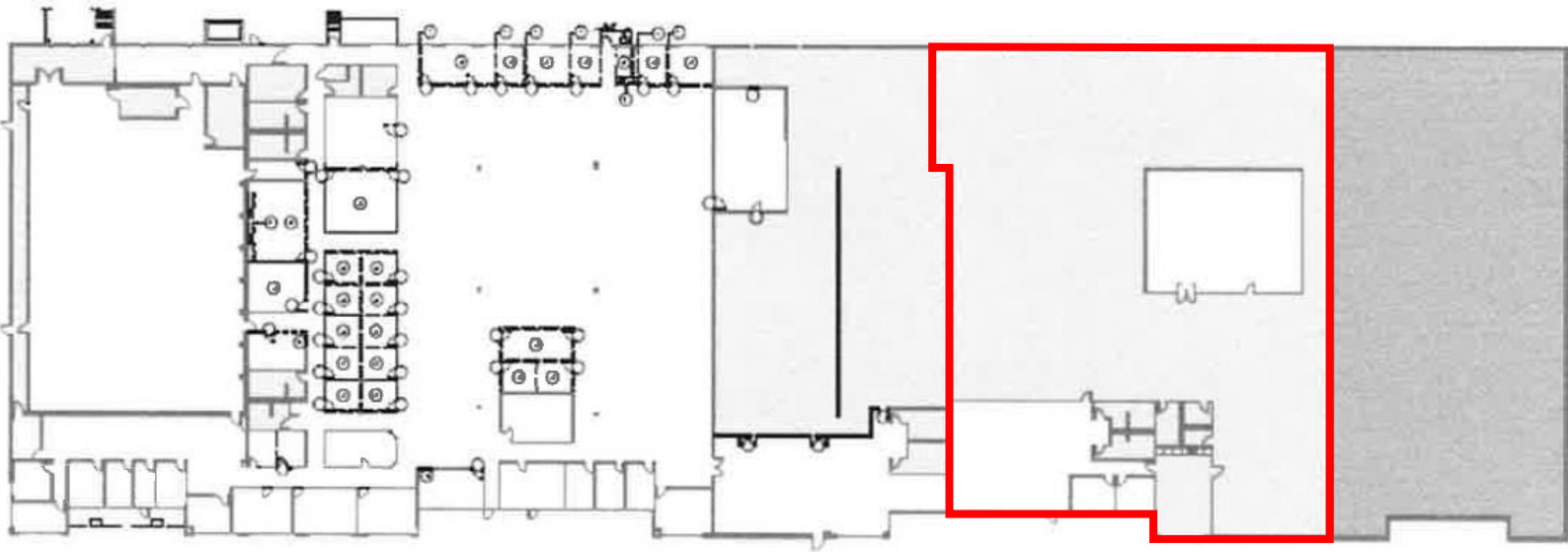
Building Features

- 82,720 SF Industrial Building
- Built in 1999

This document has been prepared by Citadel Partners, LLC. for advertising and general information only. Citadel Partners, LLC. makes no guarantees, representations or warranties of any kind, expressed or implied, regarding the information including, but not limited to, warranties of content, accuracy and reliability. Any interested party should undertake their own inquiries as to the accuracy of the information. Citadel Partners, LLC. excludes unequivocally all inferred or implied terms, conditions and warranties arising out of this document and excludes all liability for loss and damages arising there from. This publication is the copyrighted property of Citadel Partners, LLC. and/or their licensor(s). All rights reserved.

3701 E Plano Parkway
Plano, Texas 75074

Sublease
Approximately 18,800 SF



Breakroom



Warehouse Area

For more information:

Andy W. Goldston, CCIM
Senior Advisor
214.420.3168 direct
469.500.9693 cell
agoldston@citadelpartnersus.com

Scott M. Jessen, SIOR, CCIM
Managing Partner
972.980.2825 direct
214.914.4068 cell
sjessen@citadelpartnersus.com

Citadel Partners, LLC.
15770 N Dallas Parkway
Suite 950
Dallas, TX 75248
main 972.980.2800

www.citadelpartnersus.com