



**CITADEL**  
PARTNERS

A REAL ESTATE ADVISORY FIRM

# JUPITER RESOURCE CENTER 2605 TECHNOLOGY DRIVE Plano, Texas 75074

## FOR SUBLEASE



### For more information:

**Andy W. Goldston, CCIM**  
Senior Advisor  
**214.420.3168 direct**  
469.500.9693 cell  
agoldston@citadelpartnersus.com

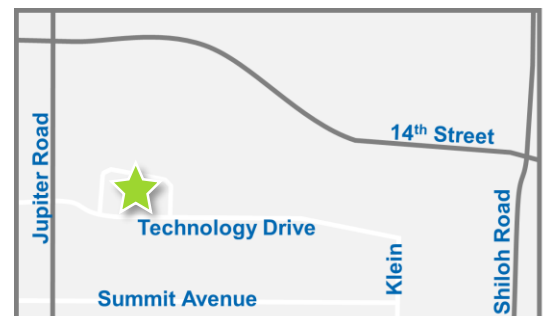
**Scott A. Morse, SIOR, CCIM**  
Managing Partner  
**972.980.2802 direct**  
214.215-3174 cell  
smorse@citadelpartnersus.com

### Space Overview

- 29,070 square feet  
± 4,000 square feet of office
- Term through 12/31/2021
- 8 dock high doors
- Furniture & racking available
- Approximately 12,800 square feet of HVAC production space
- Sprinklered

### Building Features

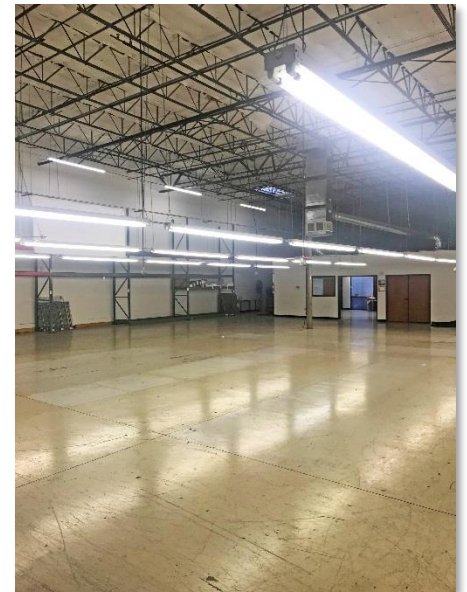
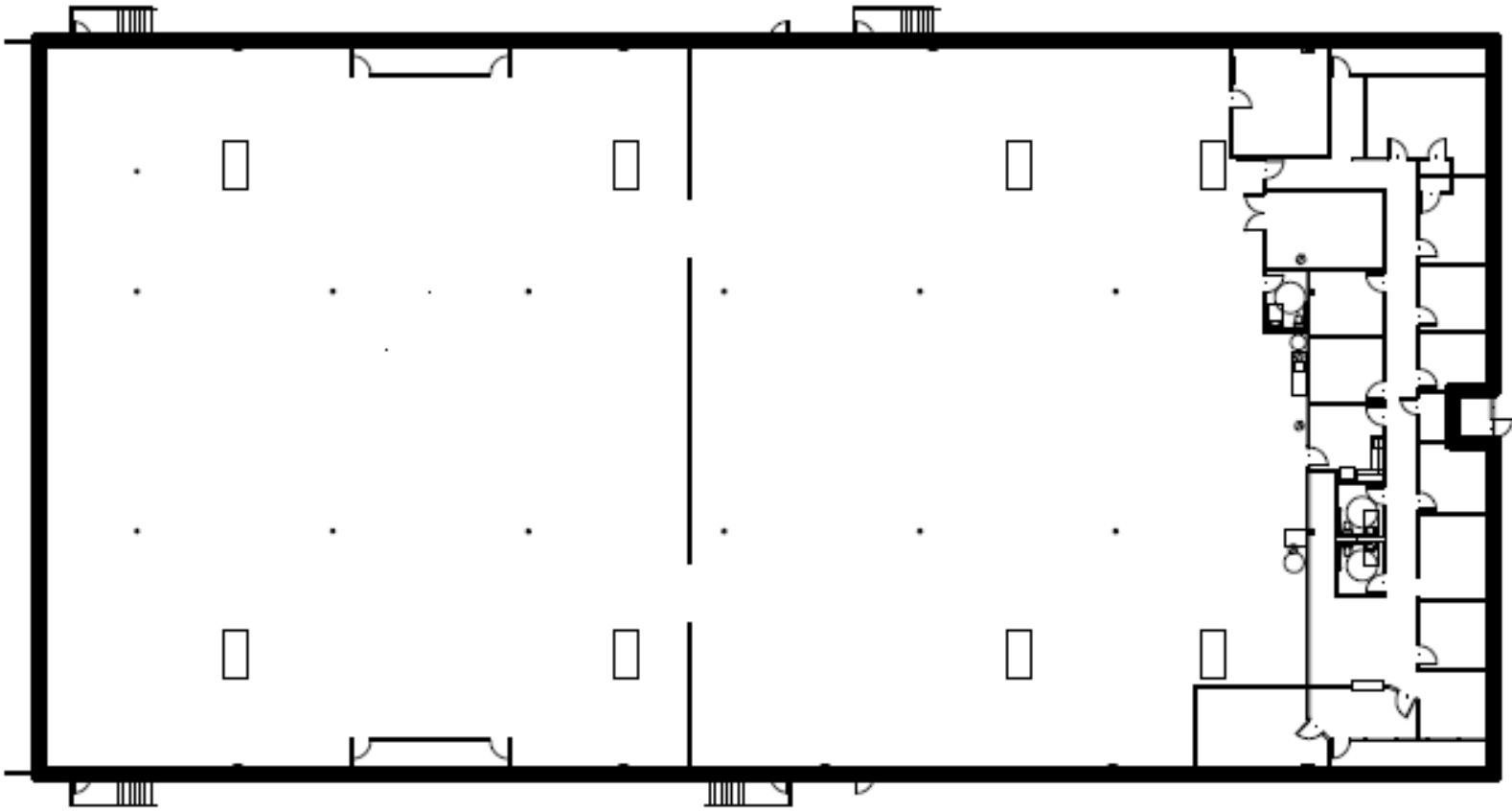
- 44,255 square foot industrial building
- Built in 1995



This document has been prepared by Citadel Partners, LLC. for advertising and general information only. Citadel Partners, LLC. makes no guarantees, representations or warranties of any kind, expressed or implied, regarding the information including, but not limited to, warranties of content, accuracy and reliability. Any interested party should undertake their own inquiries as to the accuracy of the information. Citadel Partners, LLC. excludes unequivocally all inferred or implied terms, conditions and warranties arising out of this document and excludes all liability for loss and damages arising there from. This publication is the copyrighted property of Citadel Partners, LLC. and/or their licensor(s). All rights reserved.

2605 Technology Drive  
Plano, Texas 75074

Sublease  
± 29,070 Square Feet



**For more information:**

**Andy W. Goldston, CCIM**  
Senior Advisor  
**214.420.3168 direct**  
469.500.9693 cell  
agoldston@citadelpartnersus.com

**Scott A. Morse, SIOR, CCIM**  
Managing Partner  
**972.980.2802 direct**  
214.215-3174 cell  
smorse@citadelpartnersus.com

Citadel Partners, LLC.  
15770 N Dallas Parkway  
Suite 950  
Dallas, TX 75248  
main 972.980.2800  
[www.citadelpartnersus.com](http://www.citadelpartnersus.com)