



CITADEL
PARTNERS

A REAL ESTATE ADVISORY FIRM

10000 NCX 10000 N. Central Expressway Dallas, TX 75231

FOR SUBLEASE



For more information:

Mac D. Morse
Advisor
972.980.2917 direct
469.556.1981 cell
mmorse@citadelpartnersus.com

Space Overview

- 2,120 square feet
- Term Through: August 31, 2021
- Quick Availability
- Floor to Ceiling Glass
- Elevator Exposure
- Conference Room
- Close Proximity to “The Hill”

Building Features

- 306,367 SF Building
- Built in 1986; 15 Floors
- 24/7 Security and Key Card Access
- Covered parking garage
- Full Service Deli
- Conference Facility

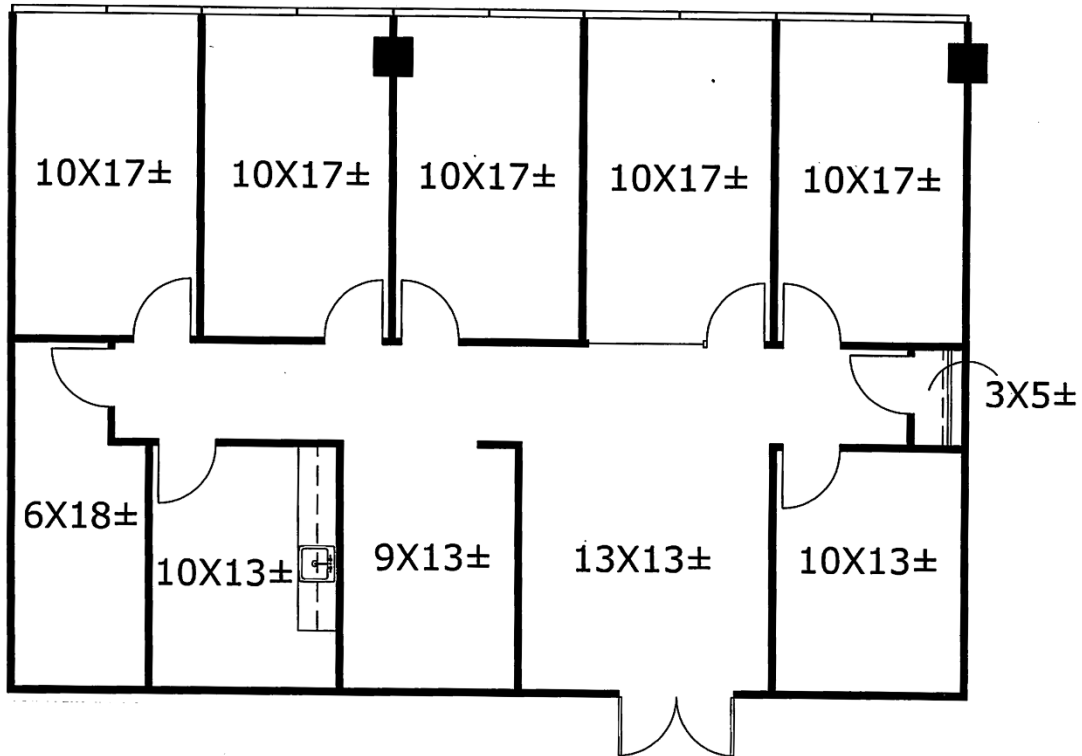
\$23.00 +E



This document has been prepared by Citadel Partners, LLC. for advertising and general information only. Citadel Partners, LLC. makes no guarantees, representations or warranties of any kind, expressed or implied, regarding the information including, but not limited to, warranties of content, accuracy and reliability. Any interested party should undertake their own inquiries as to the accuracy of the information. Citadel Partners, LLC. excludes unequivocally all inferred or implied terms, conditions and warranties arising out of this document and excludes all liability for loss and damages arising there from. This publication is the copyrighted property of Citadel Partners, LLC. and/or their licensor(s). All rights reserved.

10000 N Central Expressway
Dallas, Texas 75231

Suite 850
Approximately 2,120 SF



For more information:

Mac D. Morse

Advisor

972.980.2917 direct

469.556.1981 cell

mmorse@citadelpartnersus.com

Citadel Partners, LLC.

15770 N Dallas Parkway

Suite 950

Dallas, TX 75248

main 972.980.2800

www.citadelpartnersus.com