



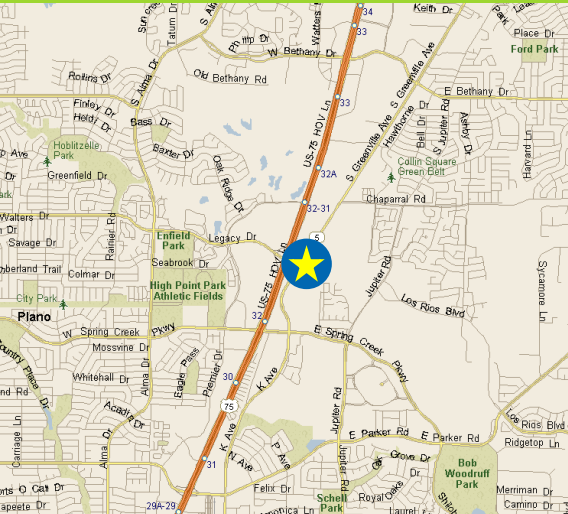
CITADEL
PARTNERS

A REAL ESTATE ADVISORY FIRM

0.73 ACRES
6690 K Avenue
Plano, TX 75074



LAND FOR SALE



Site Overview

Andy W. Goldston, CCIM
Senior Advisor

direct 214.420.3168
mobile 469.500.9693
agoldston@citadelpartnersus.com

Mac D. Morse
Advisor

direct 972.980.2917
mobile 469-556-1981
mmorse@citadelpartnersus.com

Scott A. Morse, SIOR, CCIM
Managing Partner

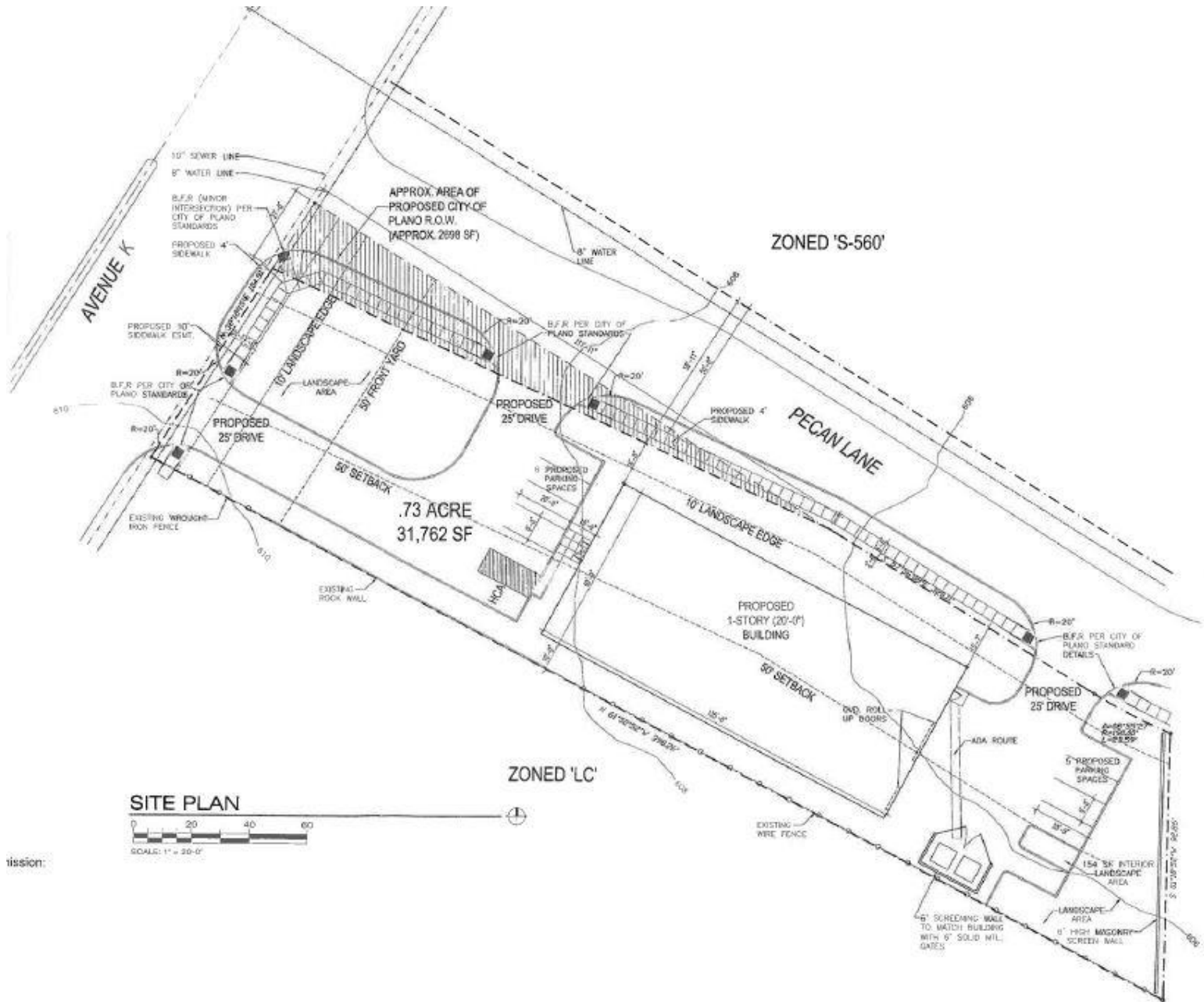
direct 972.980.2802
mobile 214.215.3174
smorse@citadelpartnersus.com

- 0.73 Acres
- Frontage on K Avenue at Legacy Drive
- Close Proximity to Central Expressway
- Nearby Amenities: Courses at Waters Creek, Collin County Community College, PSA Recreation Center
- Zoned LC (Light Commercial)
- SEC of Legacy Drive & Greenville Avenue
- Owner - FTK Construction Services

Citadel Partners, LLC.
15770 N Dallas Parkway
Suite 950
Dallas, TX 75248
main 972.980.2800

www.citadelpartnersus.com

This document has been prepared by Citadel Partners, LLC. for advertising and general information only. Citadel Partners, LLC. makes no guarantees, representations or warranties of any kind, expressed or implied, regarding the information including, but not limited to, warranties of content, accuracy and reliability. Any interested party should undertake their own inquiries as to the accuracy of the information. Citadel Partners, LLC. excludes unequivocally all inferred or implied terms, conditions and warranties arising out of this document and excludes all liability for loss and damages arising there from. This publication is the copyrighted property of Citadel Partners, LLC. and/or their licensor(s). All rights reserved.



Andy W. Goldston, CCIM
Senior Advisor
direct 214.420.3168
 mobile 469.500.9693
 agoldston@citadelpartnersus.com

Mac D. Morse
Advisor
direct 972.980.2917
 mobile 469.556.1981
 mmorse@citadelpartnersus.com

Scott A. Morse, SIOR, CCIM
Managing Partner
direct 972.980.2802
 mobile 214.215.3174
 smorse@citadelpartnersus.com

Citadel Partners, LLC.
 15770 N Dallas Parkway
 Suite 950
 Dallas, TX 75248
main 972.980.2800