



CITADEL
PARTNERS

A REAL ESTATE ADVISORY FIRM

EIGHTY-EIGHTY CENTRAL

8080 N. Central Expressway

Dallas, TX 75206

FOR SUBLEASE



For more information:

Mac D. Morse

Advisor

972.980.2917 direct

469.556.1981 cell

mmorse@citadelpartnersus.com

Scott M. Jessen, SIOR, CCIM

Managing Partner

972.980.2825 direct

214.914.4068 cell

sjessen@citadelpartnersus.com

Space Overview

- 1,500-6,589 square feet
- Term Through: September 30, 2021
- Furniture Negotiable
- Quick Availability
- Floor to Ceiling Glass
- Elevator Exposure
- Large Conference Room
- Small Conference Room
- Close Proximity to NorthPark



Building Features

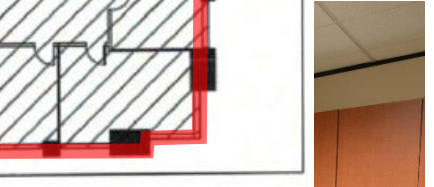
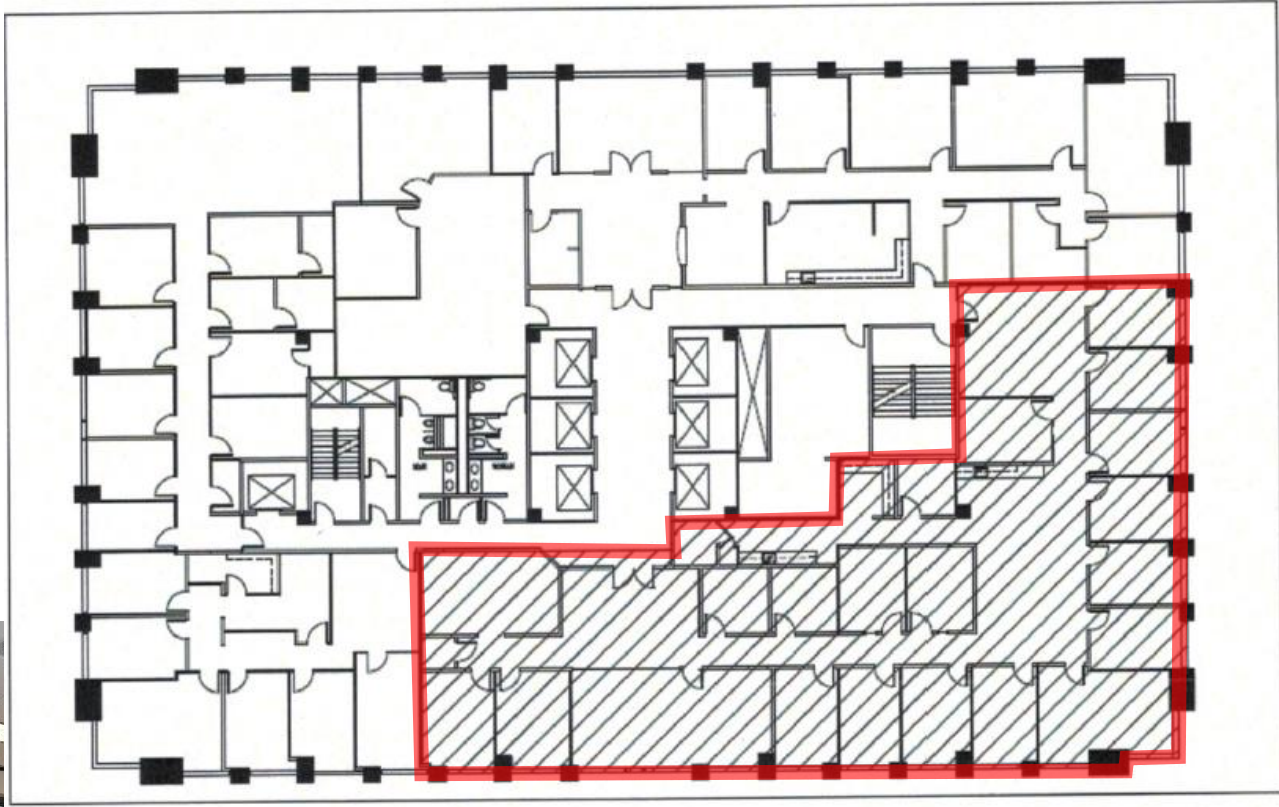
- 288,007 SF Building
- Built in 1984; 17 Floors
- 24/7 Security and Key Card Access
- Attached 12-story parking garage
- Full Service Deli



This document has been prepared by Citadel Partners, LLC. for advertising and general information only. Citadel Partners, LLC. makes no guarantees, representations or warranties of any kind, expressed or implied, regarding the information including, but not limited to, warranties of content, accuracy and reliability. Any interested party should undertake their own inquiries as to the accuracy of the information. Citadel Partners, LLC. excludes unequivocally all inferred or implied terms, conditions and warranties arising out of this document and excludes all liability for loss and damages arising there from. This publication is the copyrighted property of Citadel Partners, LLC. and/or their licensor(s). All rights reserved.

8080 N Central Expressway
Dallas, Texas 75026

Suite 1200
Approximately 1,500-6,589 SF



For more information:

Mac D. Morse
Advisor
972.980.2917 direct
469.556.1981 cell
mmorse@citadelpartnersus.com

Scott M. Jessen, SIOR, CCIM
Managing Partner
972.980.2825 direct
214.914.4068 cell
sjessen@citadelpartnersus.com

Citadel Partners, LLC.
15770 N Dallas Parkway
Suite 950
Dallas, TX 75248
main 972.980.2800

www.citadelpartnersus.com