



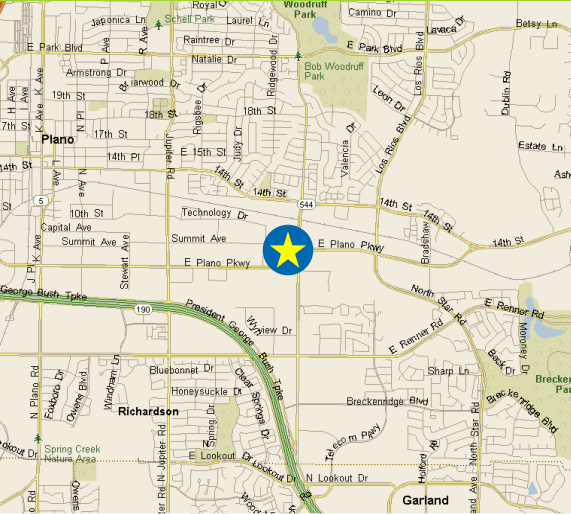
CITADEL
PARTNERS

A REAL ESTATE ADVISORY FIRM

3501 E. Plano Parkway

3501 E. Plano Parkway

Plano, TX 75074



Scott M. Jessen, SIOR, CCIM

Managing Partner

direct 972.980.2825

mobile 214.914.4068

sjessen@citadelpartnersus.com

Andy W. Goldston

Advisor

direct 214.420.3168

mobile 469.500.9693

agoldston@citadelpartnersus.com

Taylor B. Dickerson

Senior Advisor

direct 214.420.3164

mobile 214.534.3008

tdickerson@citadelpartnersus.com

Space Overview

- Approximately 9,998 Square Feet
- Lease Expiration Date: December 31, 2027
- Space is divisible to 5,000 Square Feet
- Plug-and-Play Space
- 70/30 Closed Office / Bullpen Configuration
- Designated Rest Rooms
- 2 Kitchens with Break Room
- Available for Immediate Occupancy
- Significant Offices with Windows

Building Features

- Secure Building Access
- 82,880 total Building Square Footage
- Some Furniture Included
- Easy Access to Major Thoroughfares



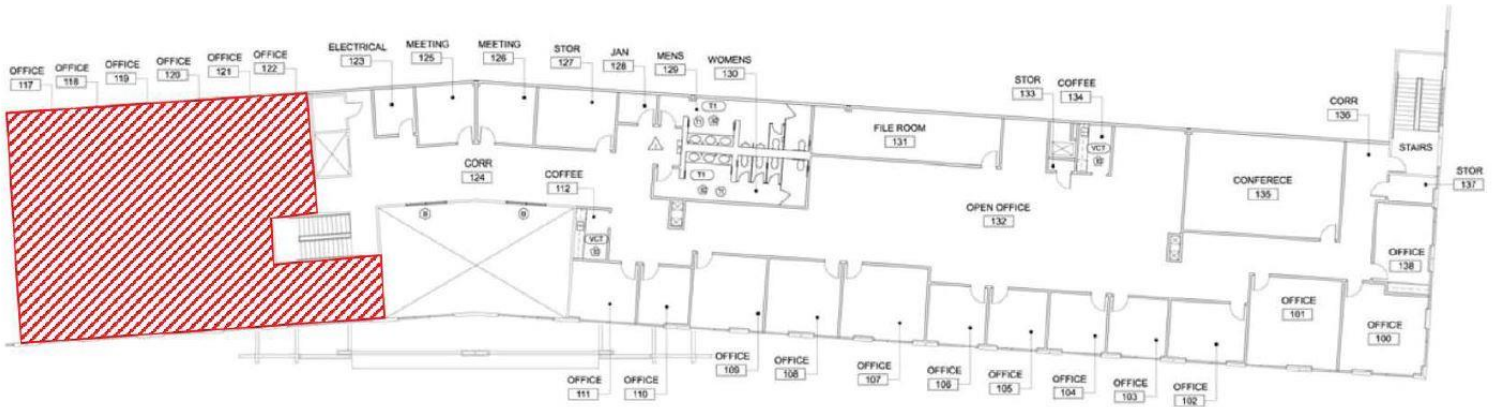
Citadel Partners, LLC.
15770 N Dallas Parkway
Suite 950
Dallas, TX 75248
main 972.980.2800

www.citadelpartnersus.com

This document has been prepared by Citadel Partners, LLC. for advertising and general information only. Citadel Partners, LLC. makes no guarantees, representations or warranties of any kind, expressed or implied, regarding the information including, but not limited to, warranties of content, accuracy and reliability. Any interested party should undertake their own inquiries as to the accuracy of the information. Citadel Partners, LLC. excludes unequivocally all inferred or implied terms, conditions and warranties arising out of this document and excludes all liability for loss and damages arising there from. This publication is the copyrighted property of Citadel Partners, LLC. and/or their licensor(s). All rights reserved.

3501 E. Plano Pkwy

Approximately 9,998 SF



Scott M. Jessen, SIOR, CCIM
Managing Partner
direct 972.980.2825
mobile 214.914.4068
sjessen@citadelpartnersus.com

Andy W. Goldston
Advisor
direct 214.420.3168
mobile 469.500.9693
agoldston@citadelpartnersus.com

Taylor B. Dickerson
Senior Advisor
direct 214.420.3164
mobile 214.534.3008
tdickerson@citadelpartnersus.com

Citadel Partners, LLC.
15770 N Dallas Parkway
Suite 950
Dallas, TX 75248
main 972.980.2800