



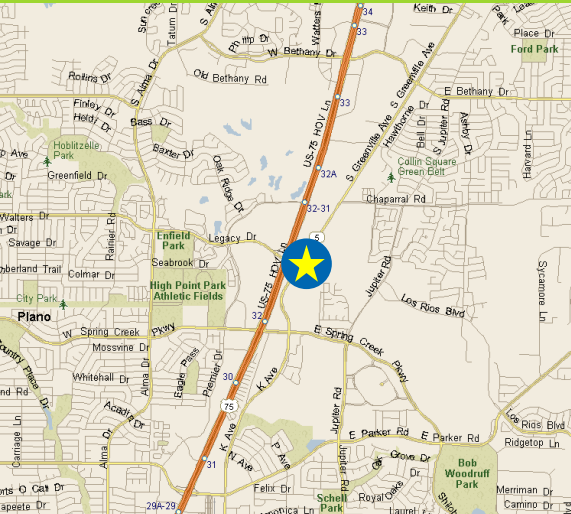
CITADEL
PARTNERS

A REAL ESTATE ADVISORY FIRM

6690 Avenue K

6690 Avenue K

Plano, TX 75074



Andy W. Goldston

Advisor

direct 214.420.3168

mobile 469.500.9693

agoldston@citadelpartnersus.com

Mac D. Morse

Advisor

direct 972.980.2917

mobile 469-556-1981

mmorse@citadelpartnersus.com

Scott A. Morse, SIOR, CCIM

Managing Partner

direct 972.980.2802

mobile 214.215.3174

smorse@citadelpartnersus.com

Site Overview

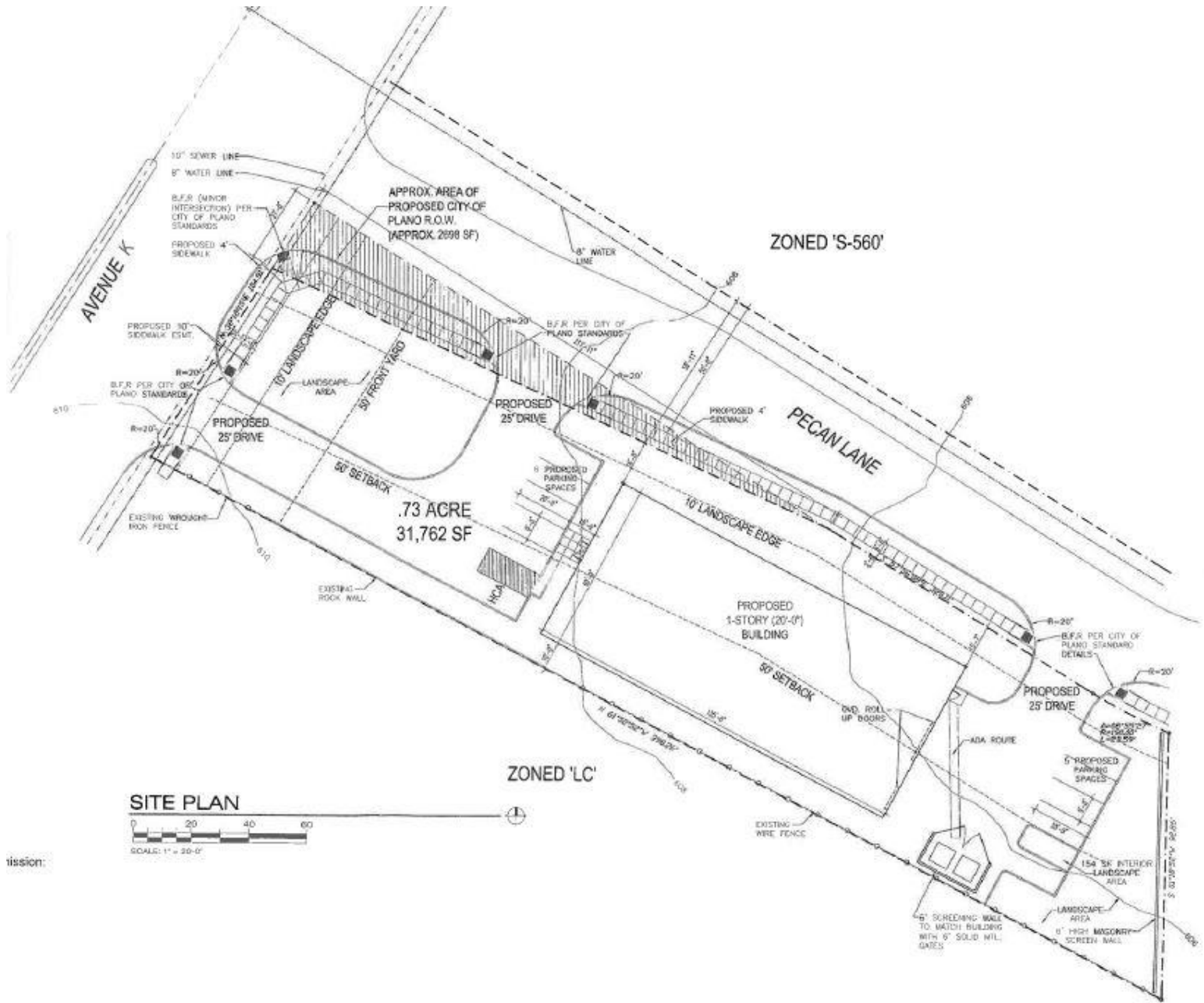
- .73 Acres
- Frontage on Avenue K at Legacy Drive
- Close Proximity to Central Expressway
- Nearby Amenities: Courses at Waters Creek, Collin County Community College, PSA Recreation Center
- Zoned LC (Light Commercial)
- SEC of Legacy & Greenville
- Owner - FTK Construction Services



Citadel Partners, LLC.
15770 N Dallas Parkway
Suite 950
Dallas, TX 75248
main 972.980.2800

www.citadelpartnersus.com

This document has been prepared by Citadel Partners, LLC. for advertising and general information only. Citadel Partners, LLC. makes no guarantees, representations or warranties of any kind, expressed or implied, regarding the information including, but not limited to, warranties of content, accuracy and reliability. Any interested party should undertake their own inquiries as to the accuracy of the information. Citadel Partners, LLC. excludes unequivocally all inferred or implied terms, conditions and warranties arising out of this document and excludes all liability for loss and damages arising there from. This publication is the copyrighted property of Citadel Partners, LLC. and/or their licensor(s). All rights reserved.



Andy W. Goldston
 Advisor
 direct 214.420.3168
 mobile 469.500.9693
 agoldston@citadelpartnersus.com

Mac D. Morse
 Advisor
 direct 972.980.2917
 mobile 469.556.1981
 mmorse@citadelpartnersus.com

Scott A. Morse, SIOR, CCIM
 Managing Partner
 direct 972.980.2802
 mobile 214.215.3174
 smorse@citadelpartnersus.com

Citadel Partners, LLC.
 15770 N Dallas Parkway
 Suite 950
 Dallas, TX 75248
 main 972.980.2800