



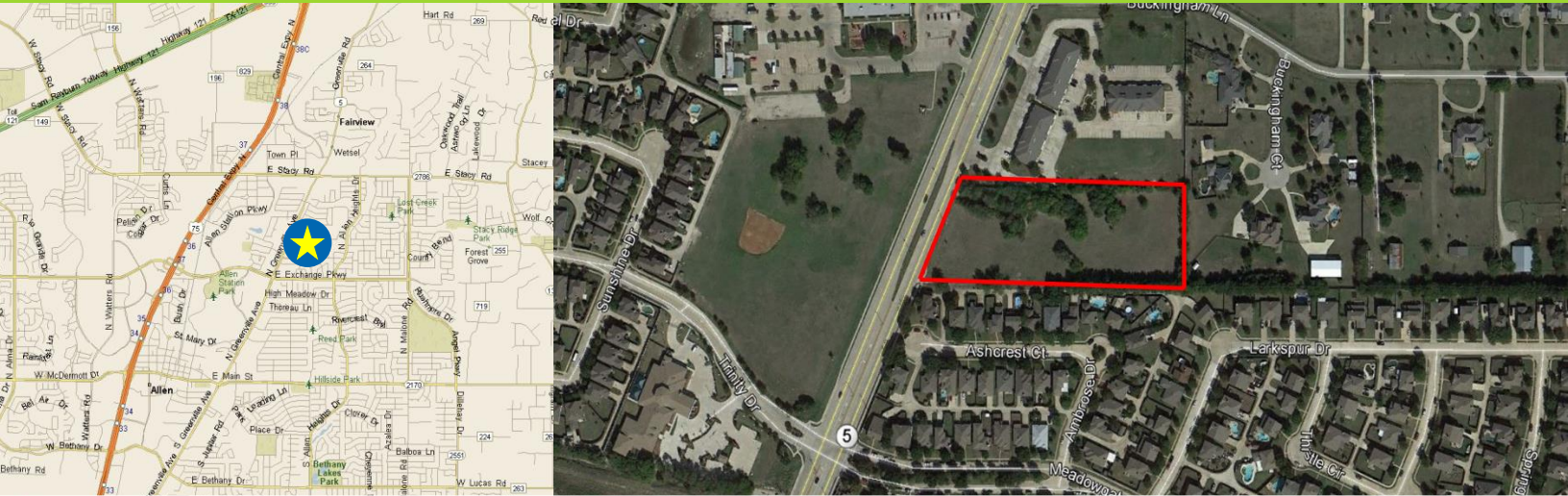
**CITADEL**  
PARTNERS

A REAL ESTATE ADVISORY FIRM

# 1500 N. Greenville

## 1500 N. Greenville Ave

### Allen, TX 75002



**Scott A. Morse, SIOR, CCIM**  
Managing Partner  
direct **972.980.2802**  
mobile 214.215.3174  
[smorse@citadelpartnersus.com](mailto:smorse@citadelpartnersus.com)

**Scott M. Jessen, SIOR, CCIM**  
Managing Partner  
direct **972.980.2825**  
mobile 214.914.4068  
[sjessen@citadelpartnersus.com](mailto:sjessen@citadelpartnersus.com)

## Site Overview

- 3.59 Acres
- 285 feet of Frontage on Greenville Ave
- Great Build-to-Suit Site
- Zoned AO (Agriculture-Open Space)
- Close Proximity to Allen High School
- Near Allen Village at Stacy Rd and North Central Expressway



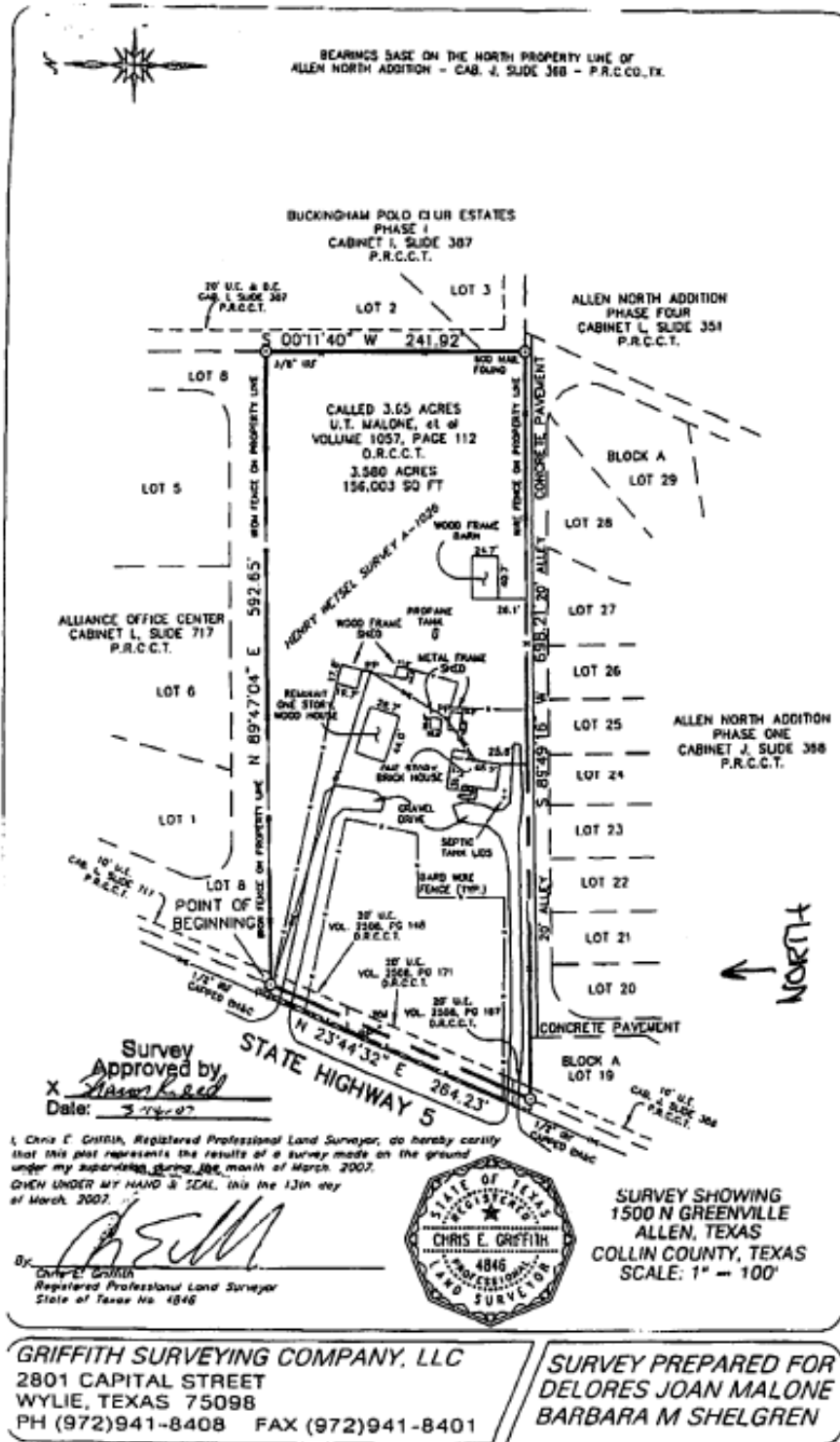
Citadel Partners, LLC.  
15770 N Dallas Parkway  
Suite 950  
Dallas, TX 75248  
main 972.980.2800

[www.citadelpartnersus.com](http://www.citadelpartnersus.com)

This document has been prepared by Citadel Partners, LLC. for advertising and general information only. Citadel Partners, LLC. makes no guarantees, representations or warranties of any kind, expressed or implied, regarding the information including, but not limited to, warranties of content, accuracy and reliability. Any interested party should undertake their own inquiries as to the accuracy of the information. Citadel Partners, LLC. excludes unequivocally all inferred or implied terms, conditions and warranties arising out of this document and excludes all liability for loss and damages arising there from. This publication is the copyrighted property of Citadel Partners, LLC. and/or their licensor(s). All rights reserved.

1500 N. Greenville Ave

Approximately 3.5 Acres



Scott A. Morse, SIOR, CCIM  
Managing Partner  
direct 972.980.2802  
mobile 214.215.3174  
smorse@citadelpartnersus.com

Scott M. Jessen, SIOR, CCIM  
Managing Partner  
direct 972.980.2825  
mobile 214.914.4068  
sjessen@citadelpartnersus.com

Citadel Partners, LLC.  
15770 N Dallas Parkway  
Suite 950  
Dallas, TX 75248  
main 972.980.2800